

## FIESTA bar

*Stops at 0° and +/- 90°*

*Self centring when within approximately 15° of closed position*

*Adjustable zero position*

*Maximum door leaf 900mm wide*

*Maximum door weight 60Kg*

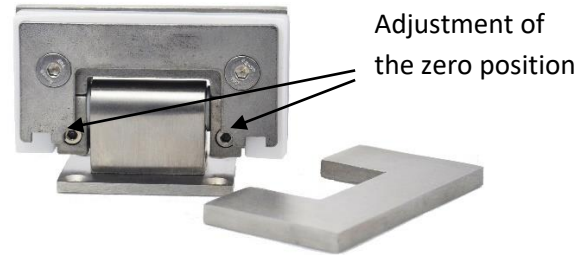
*Glass thickness 8mm, 10mm*

Finishes:

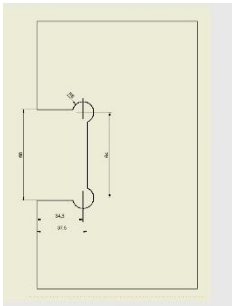
Satin Stainless Steel, Polished Stainless Steel, Non standard finishes



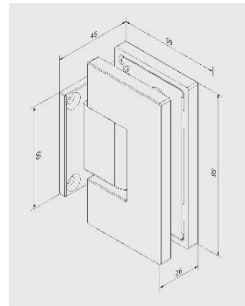
FRONT AND REAR VIEW



CONCEALED GLASS FIXING  
& ADJUSTABLE ZERO



GLASS CUTOUT



DIMENSIONS

### INSTRUCTIONS:

For 8mm glass use all shims (2 thin one on one side and 1 thick on other side of the glass).

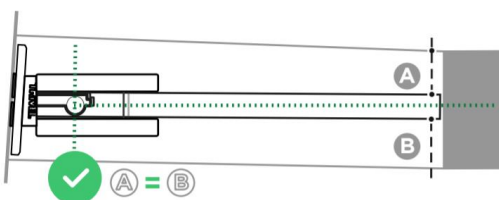
For 10mm glass use 2 thin shims (1 each side of the glass).

Use an allen key to slacken the closing tension. Fix the hinges to the glass using the correct shims. Tighten the fixing screws as far as possible by hand. Position the door in the opening and mark the screw fixing position. Drill accordingly and fix the door in place with screws.

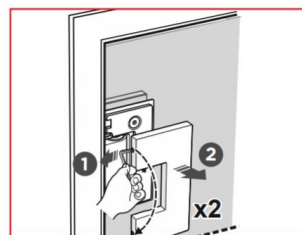
**IMPORTANT:** for the correct functioning of the door, the hinges must be in perfect vertical alignment.

Hold the door in the desired closed position and tighten the grub screws as far as possible by hand to fix the position (zero position).

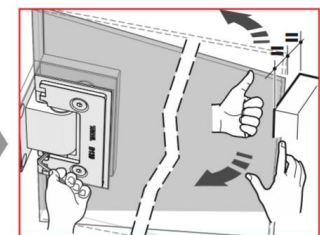
Fit the cover plate and fix into position with the small grub screws.



Adjustment of the door alignment



removable cover plate



Adjusting the zero point